

WIRELESS-N



WIRELESS-G



PCI ADAPTER

Quick Install Guide



MANUAL

VER 1.2- Ralink

Introduction

Thank you for purchasing the Wireless PCI Adapter, Wireless PCI Adapter allows you to connect your laptop or desktop to any Wireless networks in your home or office. The Wireless PCI Adapter is great for those who want to upgrade older computers to be able to access the internet over a Wireless network.

Package Contents

Wireless PCI Adapter

Setup CD with user manual

Quick install guide

System Requirements

Notebook or desktop PC with Pentium 1 GHz-compatible or higher processor

Windows 2000/XP/Vista/7, MAC OS, Linux

Available 1 x PCI Slot

Installation

Turn off your computer, and remove the case as required so you can see PCI expansion slots (PCI slots are usually colored as white), and then insert the PCI wireless network card into any available the PCI slot.



Install all three antennas on the wireless network card, and make sure the antennas are securely installed. To improve radio reception, please adjust antennas to the position shown in the picture.



IMPORTANT: For proper operation, do *not* connect the Wireless PCI Adapter to your computer before you install the software. If you do, wait for the Found New Hardware screen to display and click “**Cancel**”; otherwise, the installation process will likely be adversely affected.



Insert the included setup CD in the CD-ROM Drive and start the Setup.exe program.

To start the installation, please click on the “**PCI Wireless 802.11N Drivers**” or “**PCI Wireless 802.11G Drivers**”



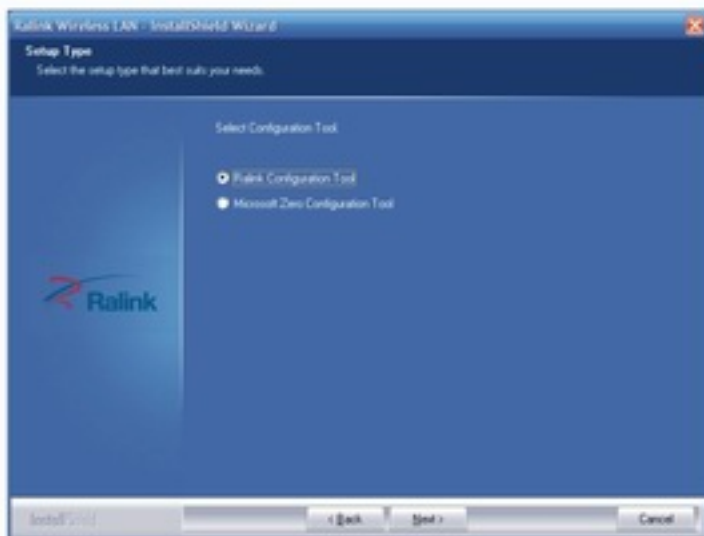
Wait for the installer to run

When the License Agreement screen displays, read the agreement and click “Next” to accept the terms and continue with the installation.

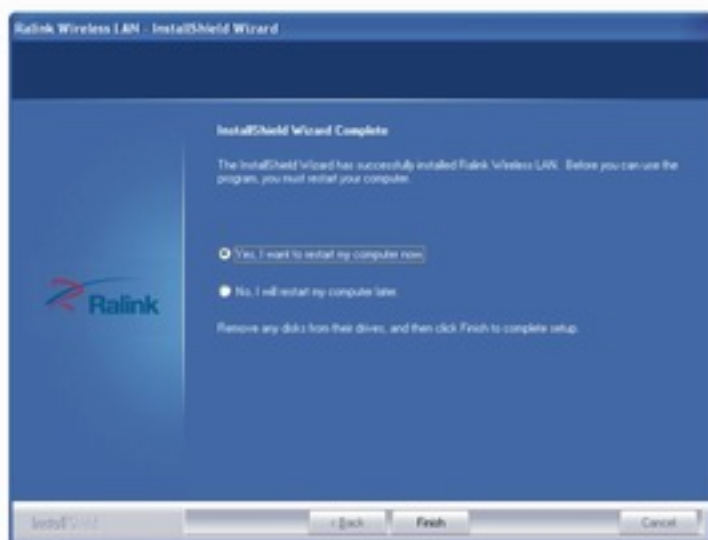


On the second Setup Type screen (below), choose a configuration tool. “Ralink Configuration Tool” is recommended, as it provides access to all adapter features.

If you prefer to use the tool provided by Windows XP/Vista, select “Microsoft Zero Configuration Tool.” Choose either (the setting can be changed after the install), then click “Next.”



The installer will automatically install the program. When done Select **Yes**, I want to restart my computer now and click **Finish** to reboot your computer.



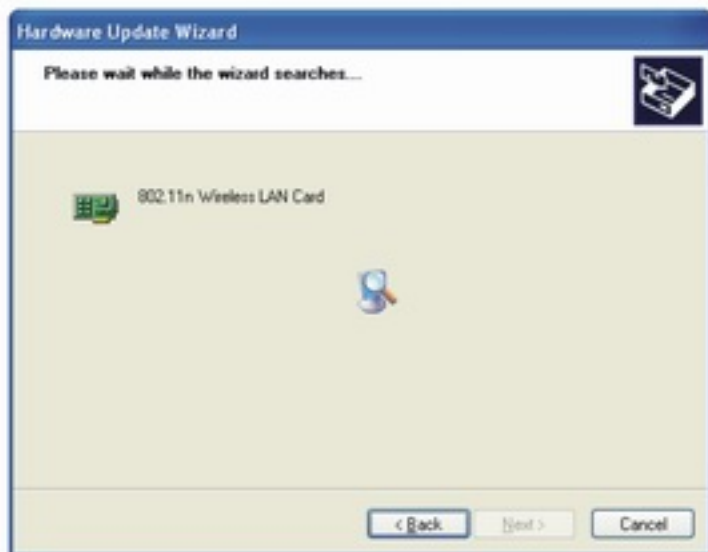
When the computer turned on, With the Welcome to the Found New Hardware Wizard screen displayed (which is automatic when the adapter is connected to the .computer), select the option "No, not this time" and click "Next."



When prompted with “What do you want the wizard to do?” select “Install the software automatically (Recommended)” and click “Next.”



A status screen will display, indicating that the installation is in progress. No action is needed at this point.



When the Completing the Found New Hardware Wizard screen displays, it indicates that the installation has been successfully completed and your Wireless PCI Adapter is ready for configuration.

Configuration

Once the installation is complete, you can configure the Wireless PCI Adapter to connect to a wireless access point (AP). The wireless configuration utility will start automatically, and you'll also find a tray icon at the lower right in your Windows systems tray.

1. Right-click the RaUI icon and select “Launch Config Utility.”



2. The configuration utility will scan for wireless networks within range. Click “Rescan” to refresh the list of available wireless networks. To join a particular network that displays, select it and click “Connect.”



3. If the wireless network uses encryption, you need to input the correct encryption key. The configuration utility automatically suggests the correct authentication type (see the drop-down list), and you should not change the suggested value.

NOTE: For WPA/WPA2 networks, you need to select the correct encryption type, as well (AES or TKIP). These settings depend on how the wireless network is set up. Only the owner of the wireless network can provide the required information.



4. If the wireless access point is successfully connected, you'll see ► in front of the name of the wireless device.



NOTE: For advanced settings and additional features of the Wireless USB Adapter, refer to the user manual on the enclosed CD.

WEEE Directive & Product Disposal



At the end of its serviceable life, this product should not be treated as household or general waste. It should be handed over to the applicable collection point for the recycling of electrical and electronic equipment, or returned to the supplier for disposal.